

# Living walls or vertical Garden

---



## ***EMPHASIS*** LANDSCAPE & DESIGN

We undertake Landscape Design, Development, Vertical garden, Terrace garden, Consultancy, Orchard development, Supply of Indoor & Outdoor plants, Organic Manure, Tools & implements, etc.

No 318, 16<sup>th</sup> A Cross, 1<sup>st</sup> A Main, Behind Kanti sweets  
Yelahanka Newtown, Bangalore-560065

Tel No. 080-41572703

Mbl No: 9972590092, 9900111176, 9980960940

Email ID: [info@eldindia.com](mailto:info@eldindia.com), Website: [www.eldindia.com](http://www.eldindia.com)



Emphasis Landscape & Design

# Benefits of Vertical Garden

Green walls are found most often in urban environments where the plants **reduce overall temperatures** of the building. "The primary cause of heat build-up in cities insulation, the **absorption of solar radiation** by roads and buildings in the city and the storage of this heat in the building material and its subsequent re-radiation

The plants may **purify slightly polluted water** (such as grey water) by absorbing the dissolved nutrients. Bacteria mineralize the organic components to make them available to the plants. Living walls are particularly suitable for cities, as they allow **good use of available vertical surface** areas.



# Components of Vertical Garden

- **Fabrication:** SS/Aluminium/MS Fabrication structure to hold the Module.
- **Modules:** Vertical Modules OR Biowall to hold the planting media and plants.
- **Irrigation system:** to water the plants
  - a. Main Pipe
  - b. Lateral pipe
  - c. Micro tubes
  - d. Drippers
- **Plants :** Selection of plants depends on Site conditions like Sunlight, Air circulation and the interest of Clients on color, form, scale etc



# WHAT DO PLANTS REQUIRE ?

## BASIC FACTORS RESPONSIBLE FOR SUCCESS OF THE VEGETATION

- LIGHT: NATURAL OR ARTIFICIAL
- GROWTH MEDIUM OF RIGHT QUALITY
- MOISTURE LEVELS NEAR ROOT ZONE
- ENOUGH DEPTH FOR ROOTS TO ABSORB NUTRIENTS
- ROOT ZONE TEMPERATURE
- AIR QUALITY
- WATER QUALITY



# UNDERSTANDING MICRO CLIMATE

## BASIC FACTORS RESPONSIBLE FOR SUCCESS OF THE VEGETATION

### A.UNDERSTANDING SITE SPECIFIC MICRO-CLIMATIC FACTORS.

1. LIGHT INTENSITY, AVAILABILITY AND DURATION
2. HUMIDITY
3. NEARBY FIRE PLACE / CHIMNEY
4. DIRECTION OF GREEN WALL- FACE
5. AVAILABILITY OF LIGHT: OPEN TO SUNLIGHT, SHADE, SEMISHADE,AIRCONDTION
6. OTHER STRUCTURES, TREES & OTHER ELEMENTS THAT CAN AFFECT MICRO CLIMATE
7. WIND VELOCITY
8. NEARBY INDUSTRIAL ESTABLISHMENTS CAUSING DIFFERENT TYPES OF MICRO-CLIMATIC HAZARDS LIKE DUST, SMOKE, FUMES, GASES & OTHERS.
9. WATER QUALITY



# DIFFERENT TYPES OF VERTICAL GARDEN



Emphasis Landscape & Design

# OPTION 1: OMNI GREEN WALL SYSTEM, PATENTED PRODUCT AND SUSTAINABLE



Emphasis Landscape & Design

# OMNI GREEN BIO-WALL SYSTEM



Emphasis Landscape & Design



# OMNI GREEN BIO-WALL SYSTEM



Back support member for OMNI Green vertical garden system



Emphasis Landscape & Design

# OMNI GREEN WALL SYSTEM



Emphasis Landscape & Design



# OMNI GREEN WALL SYSTEM



Emphasis Landscape & Design



# OMNI GREEN WALL SYSTEM



Emphasis Landscape & Design



# OMNI GREEN WALL SYSTEM



Emphasis Landscape & Design

# OMNI GREEN WALL SYSTEM



Emphasis Landscape & Design

# OPTION 2: LIVING WALL SYSTEM, , PATENTED PRODUCT AND SUSTAINABLE



Emphasis Landscape & Design



## OPTION 2: LIVING WALL SYSTEM



Emphasis Landscape & Design

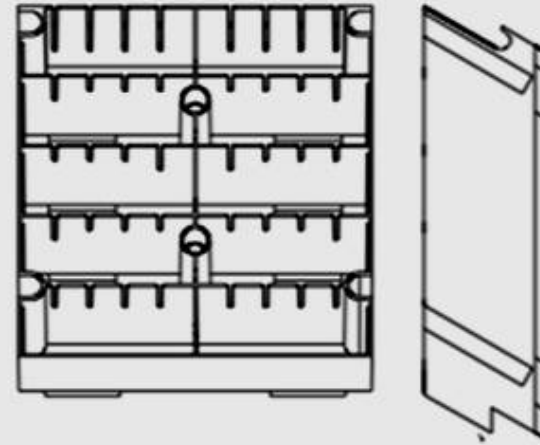


# LIVING WALL SYSTEM

## ELT Living Wall System

### FEATURES:

- Modularity for easy installation & handling.
- Recyclable polypropylene copolymer material with longer life expectancy.
- Size 300 mm x 300 mm x 100 mm.
- Provision for screwing the panels to mounting strips.
- Individual cells for water retention & plant support.
- Panel spacers on the back to keep panel away from wall & allow for an air space.
- 2 Mounting channels across the back, support weight across the whole panel.
- Top collection chamber for irrigation emitter line.



- Water management incorporated into design with the notches.
- Drain window for each compartment to drain water into catchment area of lower panel.
- Unique Z pattern of nesting help to transfer water and provide stability to the Green wall.
- Drain tray is provided at the base of the Green wall to collect excess water.



# LIVING WALL SYSTEM



Emphasis Landscape & Design



# LIVING WALL SYSTEM



**DELTA, MUMBAI.**



Emphasis Landscape & Design



# LIVING WALL SYSTEM



THRISSUR, KERALA.



Emphasis Landscape & Design



# LIVING WALL SYSTEM



Emphasis Landscape & Design

OPTION 3: BIOWALL MODULE,  
LOCAL MADE NOT  
SUSTAINABLE. MAINTENANCE  
AND MORTALITY OF PLANTS IS  
MORE

NOT RECOMENDED





# OPTION 3: BIO WALL



BIO WALL SIZE- 6INCHES X 18INCHES

HOOK POTS



# BIOWALL SYSTEM



100ft Htx 50ft wide



Emphasis Landscape & Design

Brigade opus, Kodigehalli gate, New Airport road



# BIOWALL SYSTEM



Emphasis Landscape & Design

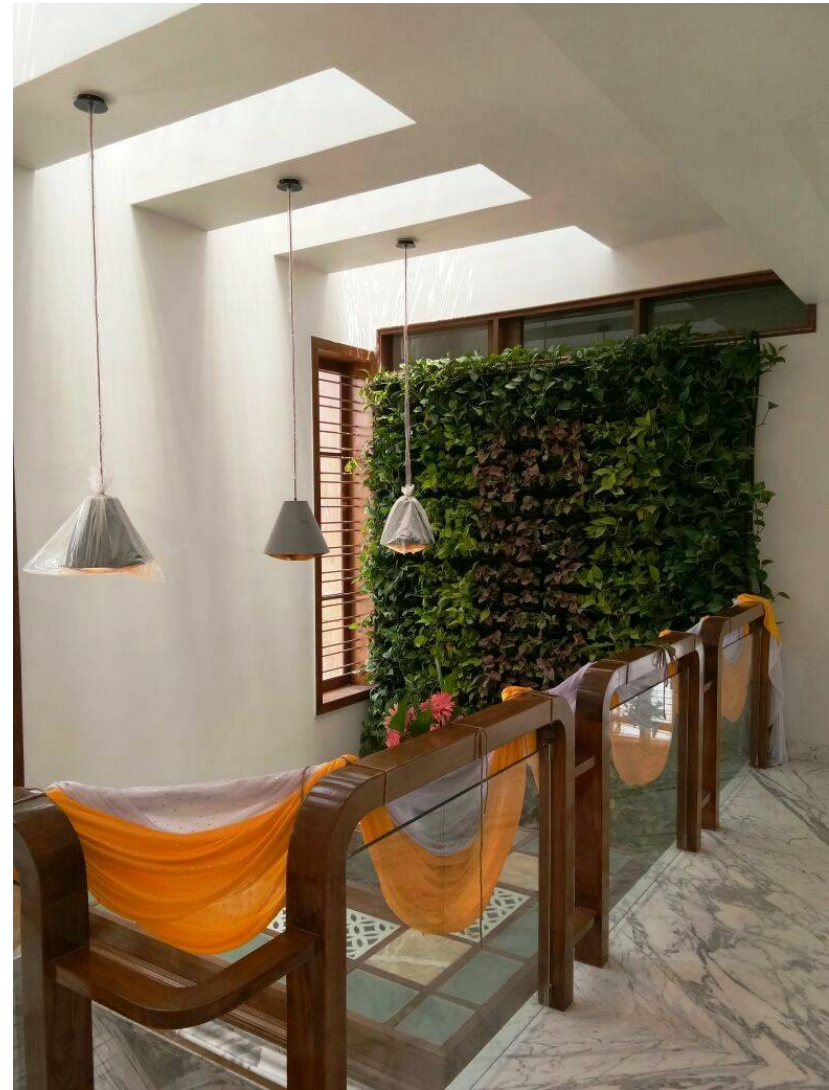
**Musigma Movable vertical garden with wheels**



# BIOWALL SYSTEM



**ATOS**



**Mr.Anand , Rose bay villa**



Emphasis Landscape & Design

# BIOWALL SYSTEM



Emphasis Landscape & Design

Mercedes Benz



# BIOWALL SYSTEM



Emphasis Landscape & Design

Visa

# BIOWALL SYSTEM



Emphasis Landscape & Design

CNW

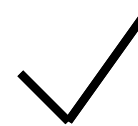


## DIFFERENCE BETWEEN BIOWALL MODULE AND LIVING WALL

PARTICULARS	BIOWALL	LIVING WALL	OMNI GREEN
<b>MODULE</b>	3 POTTED SYSTEM NOT PATENTED	PATENTED PRODUCT	PATENTED PRODUCT
<b>PLANTING MEDIA</b>	BIODEGRADABLE	NON BIO DEGRADABLE	NON BIO DEGRADABLE
<b>VISIBILITY OF MODULES</b>	YES	NO	PARTIAL
<b>MORTALITY OF PLANTS</b>	8 TO 10% PER MONTH	1 TO 2% PER YEAR	2 TO 3% PER YEAR
<b>WATER DISTRIBUTION REQUIREMENT</b>	UNEVEN AND MODERETE REQUIREMENT	EVEN AND VERY LESS REQUIREMENT	EVEN AND VERY LESS REQUIREMENT
<b>WARRANTY FOR PLANTS</b>	NO WARRANTY	1 YEAR, *CONDITIONS APPLY	6 MONTHS, *CONDITIONS APPLY
<b>WARRANTY FOR MODULE</b>	1 YEAR	5 YEARS	5 YEAR
<b>MAINTENANCE COST APPROX 100SFT</b>	Rs.6000 PER MONTH	Rs.2500 per month	3500 Per Month



Emphasis Landscape & Design



# MOSS VERTICAL GARDEN FOR INDOORS



Emphasis Landscape & Design

# MOSS VERTICAL GARDEN FOR INDOORS



Emphasis Landscape & Design



# MOSS VERTICAL GARDEN FOR INDOORS



Emphasis Landscape & Design

## AWARDS AND RECOGNITION

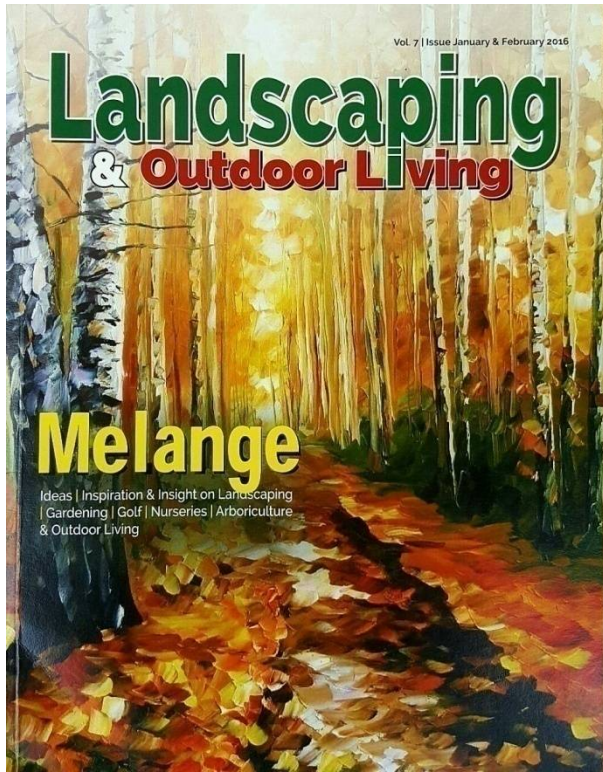
**BEST VERTICAL GARDEN AWARD BY MYSORE HORTICULTURAL SOCIETY LALBAGH, BANGALORE  
HELD ON 13-08-2018 AT Dr.MARIGOWDA MEMORIAL HALL, LALBAGH**



Emphasis Landscape & Design



# AWARDS AND RECOGNITION



Advertisement

## Emphasis Landscape & Design

52 | **Emphasis Landscape & Design**

Advertisement

**Team**  
Emphasis Landscape & Design is a Partnership firm. Owned by Govindrajulu R. Chidananda K.R. & Ravi R.K.

**Services**  
We are a professional garden design consultancy and development firm. We offer turnkey services to public, residential and commercial clients across India and outside India.  
It is our goal to provide a unified and balanced relationship between people and environment. We firmly believe that the solutions we provide should achieve a delicate balance between environmental sensitivity and economic viability.  
Even the smallest space can become an oasis of tranquility in the right hands. Our responsibility, therefore, is not merely to provide you with solutions for today, but solutions that will be effective, efficient and aesthetically pleasing even in times to come.  
The landscape architects and the Landscape design engineers of

our company come with more than a decade's experience in Garden and Landscape design. Emphasis's staff has built a reputation for attention to detail, customer satisfaction and flexible scheduling.  
We emphasize, as our title (tag line) suggests, providing high quality service at an affordable price. Working within your budget, you are ensured a unique design specific to you, your property, and your needs.

**Add on Services**  
We are Exclusive Distributors for

1. Drain Cells 30mm & 30mm
2. Flow on drains 13mm & 20mm
3. Geo fabric - 120 gsm, 130 gsm, 150 gsm, 180 gsm, 200 gsm
4. Drain board 8mm

53 | **Emphasis Landscape & Design**

Advertisement

5. Grass pavers 30mm & 40mm

**Our Clients**

- IT Parks & Industrial Landscape
- Dell, Noida
- M/s Sigma Aviator building, ITP, Bangalore
- Thoughtline Trivandrum
- General Electricals, Pune
- EMC2, SEZ, Bagmane Tech Park, Bangalore
- Dell, Coimbatore
- Wipro Pvt Ltd, Electronic city, Bangalore
- Guidance Design systems (Pvt) Ltd, Ecospace SEZ, Bangalore
- Monsanto Holdings Pvt Ltd, Doddaballapur
- Bosch Revoroti Peenya industrial area, Bangalore
- Carl zeiss india Pvt Ltd, Bommasandra Industrial area, Bangalore
- Vodafone south Ltd, Bangalore
- Bagmane tech park, CV Raman nagar
- Bagmane World technology centre
- Adobe Pvt Ltd, privilege plaza, industrial area
- Kopper plant India Pvt Ltd, Malur industrial area
- Wipro India Pvt Ltd, Malur industrial area
- Insulan polymers India Pvt Ltd, Malur industrial Area
- Capgemini, Divyasree builders, Technopark SEZ, Area
- Divyasree Builders, 77 degree east project premium villa,
- Shoba halycon, Hoskote - whitefield road for Shoba developers
- Divyasree Chambers - Divyasree infrastructure Pvt Ltd
- Adobe New Office at Marathalli Outer Ring Road
- Visa New Office at Bagmane Technology centre
- Aluati India Pvt Ltd, Office at Ulsoor
- L & T Constructions and construction Pvt Ltd, Doddaballapur
- Vodafone new office, Ecospace
- Redknee technologies, Manyata tech park
- General motors, ITP, Bangalore

**Design Consultancy**

- LGCL - Luminar, Bangalore
- LGCL - Bamboo Forest, Bangalore
- Demata Bios, Sarjapur road, Bangalore
- LGCL - New Life project

**Address:**  
**EMPHASIS LANDSCAPE & DESIGN**  
ND-316, 16th 'A' Cross, I 'A' Main, Yelahanka New Town, Bangalore-560066.  
Tel No: 080-41577013, Mbl: 990211176, 99175 90092, 99909 60940  
E-mail: info@emphasisindia.com, website: www.emphasisindia.com

54 | **Emphasis Landscape & Design**



Emphasis Landscape & Design



# AWARDS AND RECOGNITION

Vol. 8 | Issue January - February 2017 | Rs. 100

# Landscaping & Outdoor Living

**Cover Story**  
**My Salute**  
 Ideas | Inspiration & Insight on Landscaping | Gardening | Golf | Nurseries | Arboriculture & Outdoor Living

Advertorial

## Emphasis Landscape & Design

Emphasis Landscape offers a complete range of Landscape design and plant services for interior & exterior business environments. Our services include both live and artificial plant displays, a complete office Landscape service and living green wall design and installation. From the design concept to installation and ongoing maintenance we handle customer requests for any size business. Each project is distinctive in style to reflect your business' specific needs and brand.

Our emphasis, as our tag line suggests, is to provide high quality service at an affordable price. Working within your budget, you are ensured a unique design specific to you, your property and your needs.

**Some of our Services includes:-**  
**VERTICAL GARDENS:**  
 Vertical gardening is a fun, creative way to grow plants in urban spaces. As long as you've got a blank wall or bare fence that needs beautifying, you can tend edibles, annuals, even perennials with vertical garden products. Our vertical gardens will turn your bare spaces into gorgeous living walls indoors and out. The green wall revolution coincides

Landscaping & Outdoor Living | 15

Advertorial

**LANDSCAPE PLAN**  
 B. 10000 Sq. Ft. (1000 Sq. Mts.)

**EMPHASIS Landscape & Design**

plant multiplication unit. Shade house and Poly houses are built to produce large scale Vertical garden plants and also to promote different kinds of modern and imported plants to meet the customer needs.

We have standardized the planting media with different combination of natural materials to prove that the plants grow best of its growth and for satisfactory results.

All the leading Landscapers, Hotels and Developers are interested to buy from us to avail prompt supply and services.

**Our Major Clients are:-**  
 Larsen & Toubro, VISA, Brigade developers, Prestige builders, Sobha developers, Divyashree developers, Bagamane Developers, DELL, Bosch Revizth etc.

with the increased interest in urban gardening. Gardeners are growing everything in green walls. Space saving is always a good idea and green wall technology now makes it easier for a home gardener to grow up. To grow a vertical garden at home, you can purchase simple kits with pots that hook on a wire screen that can be mounted to a wall or sophisticated planting devices with drip irrigation and fertilizer systems.

**LANDSCAPE DESIGN & BUILD:**  
 Our highly creative and innovative design team intelligently outlines the important factors like water availability, soil type, drainage facility, light availability etc., for the maximum benefit

to the customers within the allocated budget.

The landscape can be created in a formal or an informal way, but generally is arranged into a series of usable garden spaces by clipped hedges, an alley of trees or bushy shrubs in containers or ground planted.

We take pride in our gardens and landscapes looking established and developed from the moment they are completed. Like all living projects, however, they flourish and mature with age.

**PLANTS NURSERY:**  
 We have well equipped 3 acres farm Nursery with scientifically developed

Architects & Interior Designers are:-  
 Rapid Corp, DSP Design, Space Matrix, Prospace, KA & GL Nithin & Anand, Kratts, Woodcraft, Cheryll Interiors etc.

For details you may contact:-  
**EMPHASIS LANDSCAPE & DESIGN**  
 NO- 318, 10th 'A' Cross, 1 'A' Main, Behind Kant Sweets, Chikabommanna Cross, Yelahanka New Town, Bangalore-560065.  
 Tel No: 080-4572703  
 Govaia-990011176,  
 Chidambara-99725 90092,  
 Ravi-99609 60940  
 E-mail: info@eldindia.com  
 Website: www.eldindia.com

16 | Landscaping & Outdoor Living



Emphasis Landscape & Design



# AWARDS AND RECOGNITION

THE TIMES OF INDIA, BANGALORE  
THURSDAY, NOVEMBER 12, 2013

TIMES CITY

## No trash enters landfills from these weddings

### Eco-Friendly Citizens Make It Green, Clean

Santha, Rediff.com

**TOP COPY**  
Bangalore: At the wedding of Times CEO Bhaskar's daughter on October 21, over 2,000 bottles of mineral water were used. So when the event was over, the empty bottles were packed off to a dry waste collection centre. Good old landfills are replacing plastic cups, separate bins for dry and wet waste, cloth napkins, and plastic waste — zero-waste weddings are beginning to make sense in Bengaluru.

Over the last few months, the number of eco-friendly weddings has increased to make it possible. One idea is to limit the number of guests. The bride and groom should go to the landfill from a wedding. For her daughter Kanika Bharat's wedding on May 20, Moonakshi Bhaskar, a member of the waste management committee, took to eco-friendly ways right from the start. From invites, to gifts for guests, everything was in sync with nature.

**ZERO-WASTE MANTRA**  
All utensils are eco-friendly and reusable. Glass, spoons, plates, coffee water handkerchiefs and lunch boxes, all are made of steel, along with metal mesh plates and bamboo leaves.  
No disposable plastic cutlery anywhere in catering. Water bottles, if used, are sent to clients open to it.  
If a lot of gifts, many clients are showing interest in eco-friendly catering. We use steel utensils and say no to plastic to segregate the waste into dry and wet and use steel for collecting water for composting. Before food goes to pigpens and dry waste, it is sent for composting. We suggest this idea to all our clients. Of 30, at least 10 per cent is thought.

**CLIENTS OPEN TO IT**  
If a lot of gifts, many clients are showing interest in eco-friendly catering. We use steel utensils and say no to plastic to segregate the waste into dry and wet and use steel for collecting water for composting. Before food goes to pigpens and dry waste, it is sent for composting. We suggest this idea to all our clients. Of 30, at least 10 per cent is thought.

Nothing enters the bins at such weddings, including leftover food. As the owner is given a headcount, cutting down on excess food. Bhaskar with Vinod and Ashish are planning to do this in the city.

Nothing enters the bins at such weddings, including leftover food. As the owner is given a headcount, cutting down on excess food. Bhaskar with Vinod and Ashish are planning to do this in the city.

Nothing enters the bins at such weddings, including leftover food. As the owner is given a headcount, cutting down on excess food. Bhaskar with Vinod and Ashish are planning to do this in the city.

Nothing enters the bins at such weddings, including leftover food. As the owner is given a headcount, cutting down on excess food. Bhaskar with Vinod and Ashish are planning to do this in the city.

## Lalbagh's blooming landscape wows crowd



EMPHASIS LANDSCAPE & DESIGN



## Fake tax inspector held for stealing tax

**Taxman News Bureau**  
Bangalore: A fake tax inspector was arrested for stealing tax. The taxman was caught with a large sum of money. The taxman was caught with a large sum of money. The taxman was caught with a large sum of money.

# COOL HOME FOR SUMMER

Greenery and a water feature indoors result in significant cooling in the summer months

**Sachin Shetty**  
THE DESIGN of a home that has within its walls, a green space and water body requires architectural planning beginning with the evolution of the concept itself. This requires careful planning as well as execution to ensure that all the elements work together. The external facade for instance, is detailed with alternating concrete wall and glass. An inner courtyard eliminates the noise and pollution of the external urban dense landscape and facilitates the concept of an internal vertical courtyard with light from the glass ceiling. This concept of open vertical light well into the courtyard helps in the visual connection of spaces from floor to floor. This ensures a good interaction of spaces, and keeps the interior spaces more active and vibrant for the family living in it. Depending on the location of the plot, the courtyard can be constructed on the eastern side to obtain optimal level of light. An inward-looking balcony with the concept of a jarok, used in Rajasthan, will also add visual interest to the spaces. It can overlook a tree and water body at the epicenter of the courtyard. A courtyard having a volume of 30 feet height has a higher impact on climatic response and gives a contemporary touch to the detailing. In a house, an indoor landscape was created by replanting a 10 feet high tree in the epicenter of the courtyard. Hence, the tree was used as a focal point for the construction of a vertical courtyard. The scale of the tree was chosen relative to the available space and volume, and it relates to the 30 feet high volume of the courtyard. The entire home now thrives around this courtyard. All the rooms are placed around this courtyard and a water cascade on the ground floor is an added attraction in the green space. Huge windows have been placed to face this courtyard. These internal windows are detailed with openings that can regulate air ventilation as required. These internal windows are placed in line with the external windows from the front and facade. Interior landscaping has been given a prominent place in this house, since it is placed on a compact old urban development of the city. A terrace garden too can be used to create an internal green space, with the combination of a water body and dry landscaping. The pugna room can be built on the side facing the eastern wall with a skylight, and can be artificially lit, have artistically carved wood panels with motifs of flowers or petals falling from above, and this panel can be used as a floor to ceiling backdrop.

*(The author is an architect)*

Golden Jubilee Year 2013-14

UNIVERSITY OF AGRICULTURAL SCIENCES GKVK, BANGALORE

## Urban Krishi Mela and National Seminar on Urban Horticulture and Organic Roof Top Gardening

### Certificate

This is to Certify that

Mr. / Ms. / Dr. *Emphasis Landscape & Design*

has been awarded the prize for

Best Stall / Best Urban Farmer at

Urban Krishi Mela

held at University of Agricultural Sciences, GKVK, Bangalore on October 27-28, 2013.

*(K. Narayana Gowda)*  
Vice Chancellor

*(C. Vasudevappa)*  
Dean (PGS)

## Lalbagh's blooming landscape wows crowd



EMPHASIS LANDSCAPE & DESIGN



ಗೃಹವಿನ್ಯಾಸ - ಮಾರ್ಚ್ 12, 2015

ಸಮಯೋಪಯುಕ್ತ 8:17 ಮುಂದುವರಿಸಿ: 9:01

## ಸೌಕರ್ಯ ಭೂದೃಶ್ಯ ಹಬ್ಬ, 'ಲಂಬ ಉದ್ಯಾನ' ಪ್ರಮುಖ ಆಕರ್ಷಣೆ

### ಸಿಂಪುತೋಟದಲ್ಲಿ ಭೂರಮೆಯ

1. ಗಾಜಿನ ಮನೆಯಲ್ಲಿ ಮೃದಳದಿರುವ ಭೂದೃಶ್ಯವು ಒಂದು ವಿನ್ಯಾಸ. 2. ಹಬ್ಬವನ್ನು ವಿದೇಶಿ ಮಹಿಳೆಯೊಬ್ಬರು ತಮ್ಮ ಕ್ಯಾಮರಾದಲ್ಲಿ ಸೆರೆಹಿಡಿದರು. 3. ಗಾಜಿನ ಮನೆಯಲ್ಲಿ ಕಂಡುಬಂದ ಒಂದು ಆಕರ್ಷಣೆ ಮಾರದಿ. 4. ಹಬ್ಬದಲ್ಲಿ ವಿದ್ಯಾರ್ಥಿನಿಯರು ಮೊಬೈಲ್‌ನಲ್ಲಿ ಸೆರೆ ಹೆಗ್ಗುಡುಕೊಂಡು ಪ್ರಜಾವಾಣಿ ಚಿತ್ರಗಳು



Emphasis Landscape & Design

# Thank you



## **EMPHASIS** LANDSCAPE & DESIGN

*NO- 318, 16th 'A' Cross, I 'A' Main, Behind Kanti sweets  
Yelahanka New Town, Bangalore-560065.*

*Tel No: 080-41572703*

*Mbl No: 9900111176, 99725 90092, 99809 60940*

*E-mail: [emphasisblr@gmail.com](mailto:emphasisblr@gmail.com), [info@eldindia.com](mailto:info@eldindia.com)*

*Website: [www.eldindia.com](http://www.eldindia.com)*



**RECHARGE, RECYCLE, REUSE & GOGREEN.....**



Emphasis Landscape & Design